



Urban Fusion Technical  
Instructions



# Glazing | Urban Fusion

- RECOMMENDATION FOR OPTICAL LENSES:
  - Frame is designed with 5.0 base curve
  - Other base curves are possible
  - Groove should be cut to a 5.0 curve on lenses that have flatter front curves
  - Plastic spectacle lens 1.6 index or higher as well as polycarbonate and Trivex lenses
  - Patterns available from customer service
  - OMA shape files available at [www.silhouettelab.com](http://www.silhouettelab.com)
  - **DEMO LENSES SHOULD NOT BE USED FOR LENS SHAPE OR SIZING!!**

# Glazing | Urban Fusion

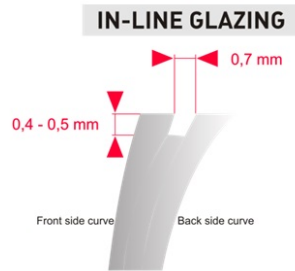
- **GLAZING AID:**
- Glazing tool VGLH3 has a smooth surface and works best with Urban Fusion



- Ribbons with rough surfaces should not be used

# Glazing | Urban Fusion

## – GROOVE DEPTH FOR INLINE GLAZING:



- LENSES SHOULD BE CUT ON SIZE. IF THE LENS IS LARGE, IT MUST BE RESIZED!!
- **UNDER NO CIRCUMSTANCES SHOULD THE SPX RIM BE HEATED**

# Remove lens | Urban Fusion

Push SPX top rim backward with the thumb.

This creates a gap between the lens and frame.

Place glazing tool between the lens and upper part of frame (1)

Move glazing tool downward and temporally (2)



1.



2.

# Remove lens | Urban Fusion

Continue to move glazing tool towards nasal curve

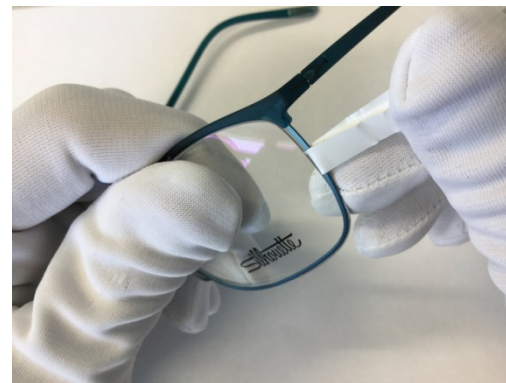
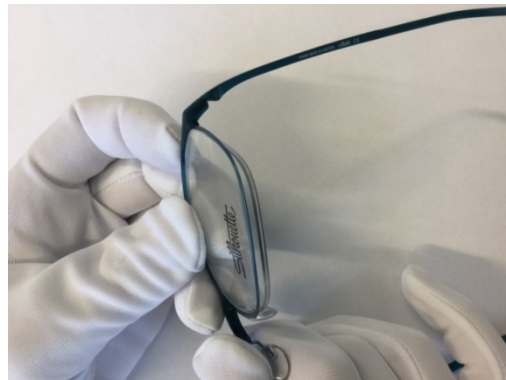
Pull frame out of the groove with glazing tool and pull titanium rim backward



# Insert lens | Urban Fusion

Insert the lens in the SPX part of the frame making sure the lens groove is in each corner of SPX

Insert glazing tool temporarily between the lens and titanium rim



# Insert lens | Urban Fusion

Move glazing tool towards the nasal curve as shown

At the nasal curve lift up eye rim and place it into the groove of the lens



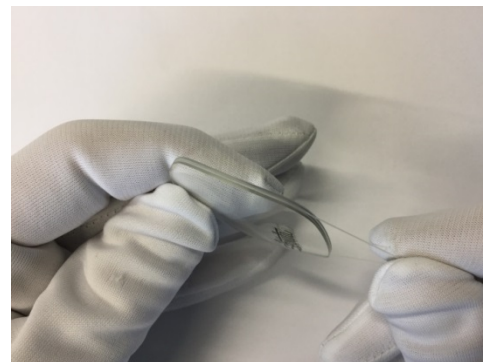


# Enclosed rubber ring | Urban Fusion

A rubber ring is enclosed with each frame, which gives a better fit to the lens

The ring is elastic and will fit all Urban Fusion lens shapes

Spare Part Number:  
P00009900250300

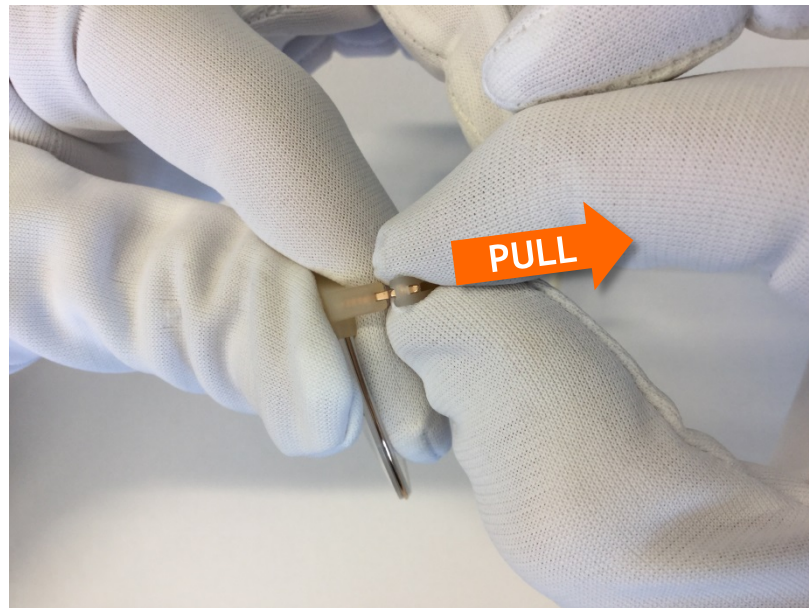


# Temple disassembly | Urban Fusion

Support the frame front with your thumb and index finger

Close the temple

Hold the temple at the hinge and pull backwards as shown



# Temple assembly | Urban Fusion

Support frame end piece with your thumb and index finger as shown

Position temple over metal hinge part in closed position

Press SPX temple into metal hinge part



# Adjust Temple End | Urban Fusion

Metal core inside temple end allows for cold adjustment of temple cover

Bend temple cover in large curves

